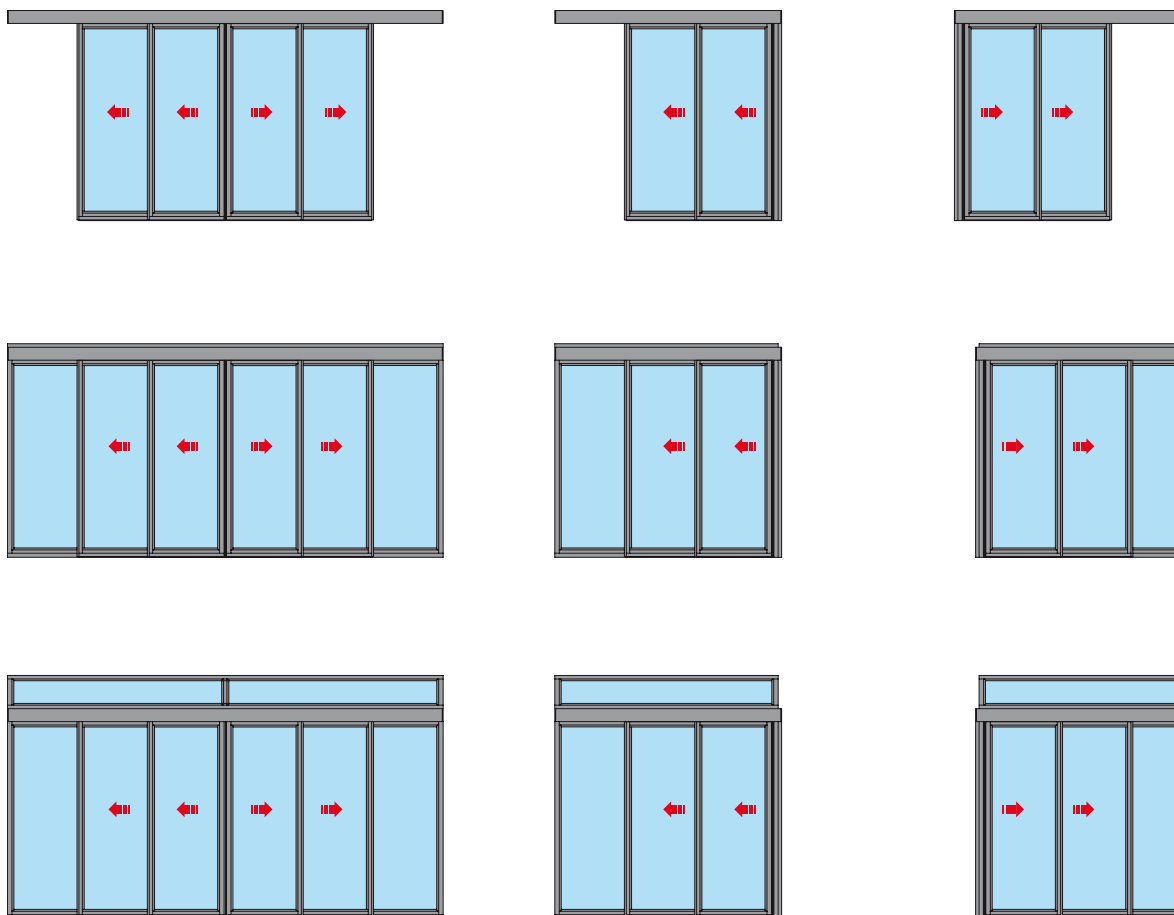


Ditec ALU48TEL

Istruzioni di installazione sistema profili ALU48 telescopico
Installation instructions for ALU48 telescopic profiles system

ENTRE//MATIC

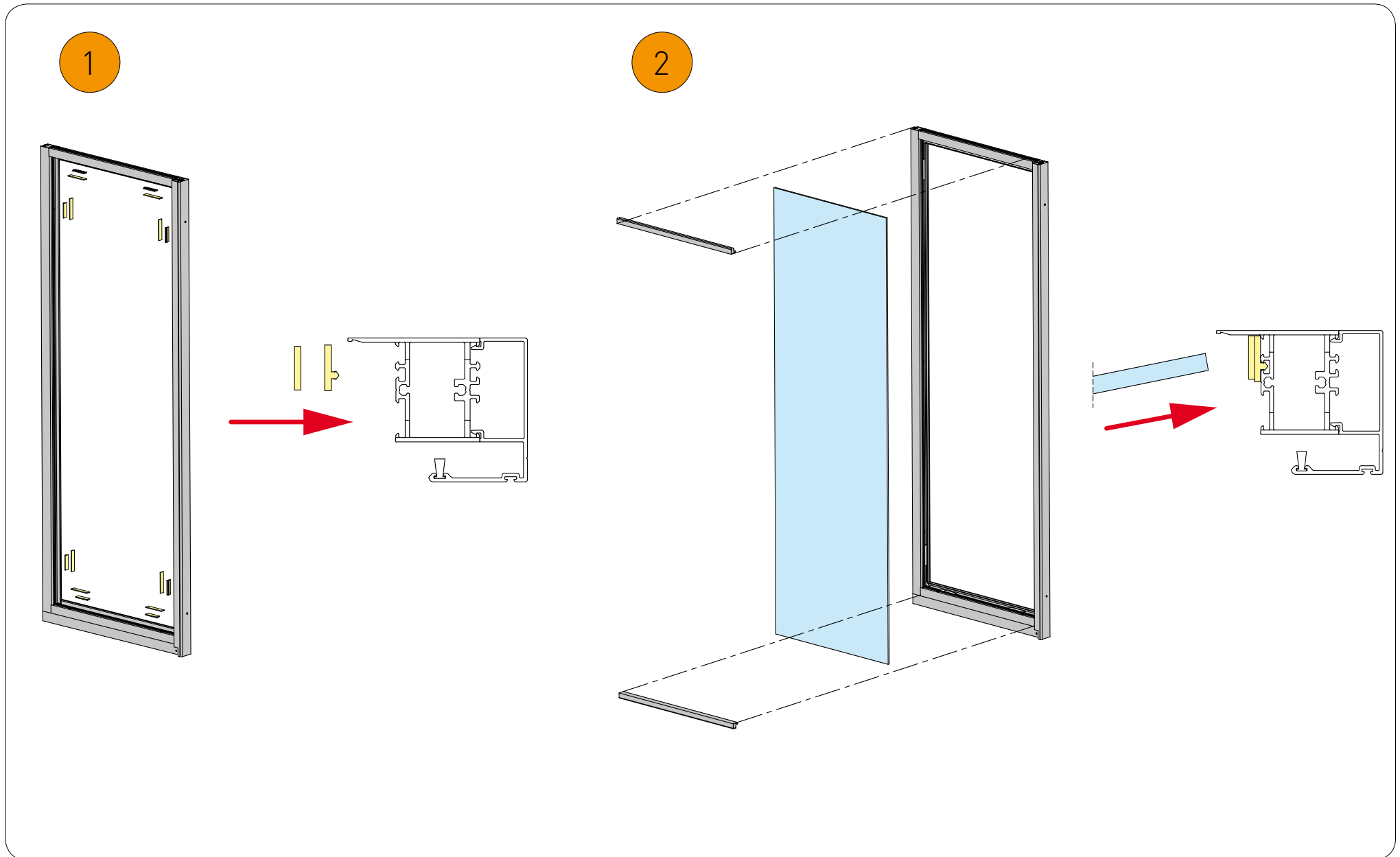
IP2188 • 2014-07-17



www.ditecentrematic.com

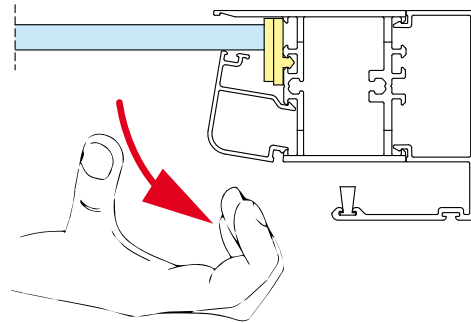
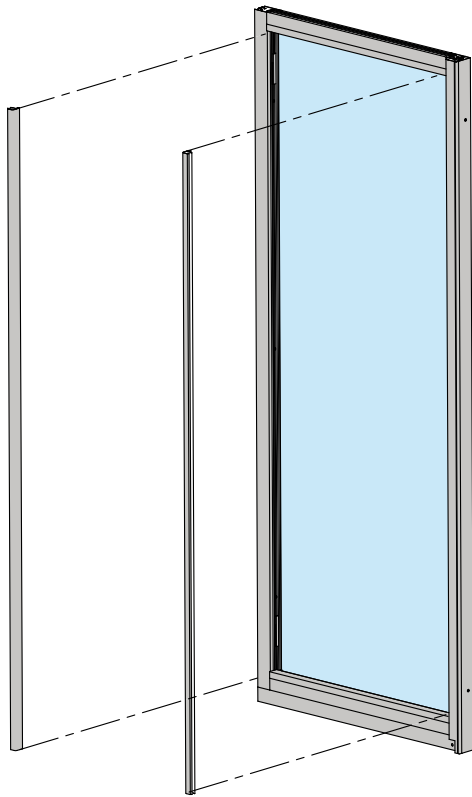


1. Instructions for placing panes on door wing

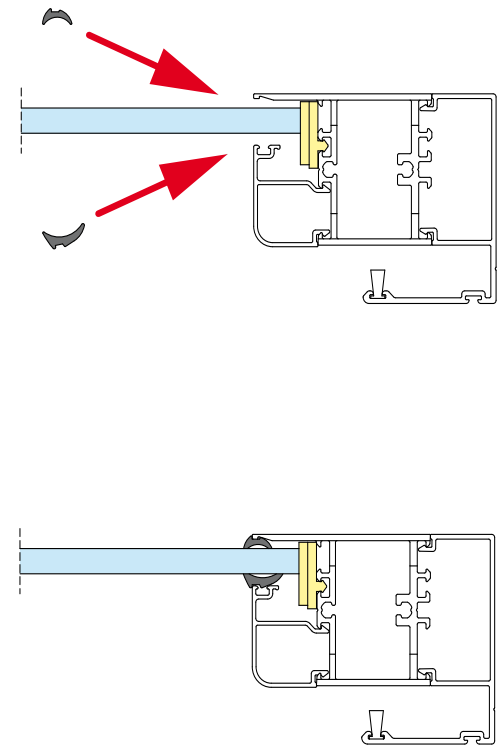
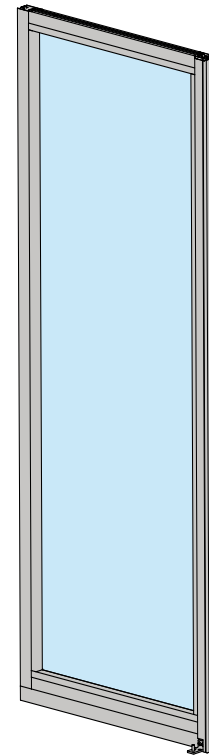


1. Instructions for placing panes on door wing

3

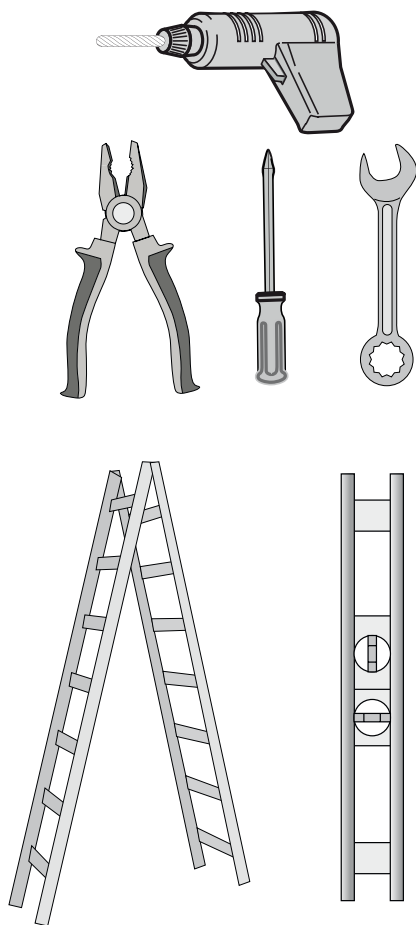


4

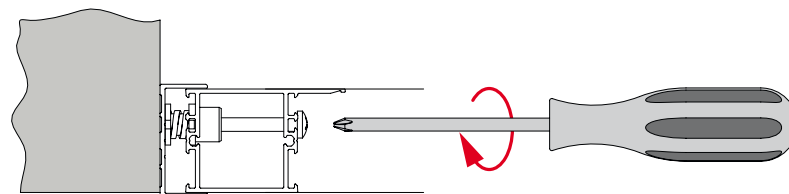
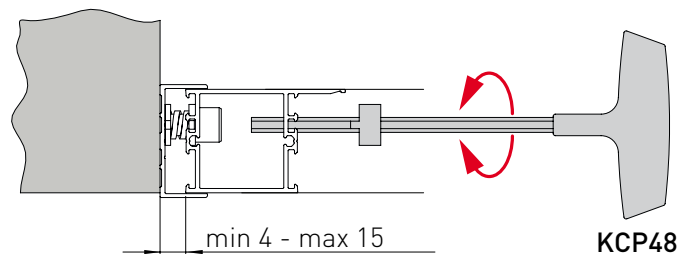
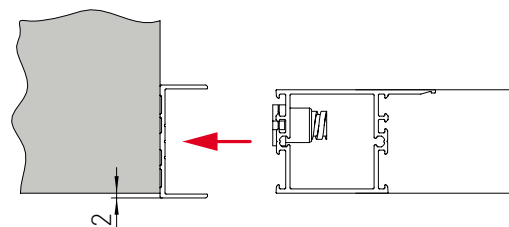


2. Installation instructions

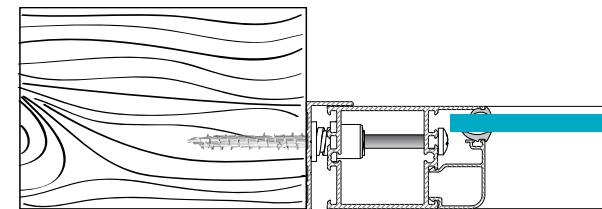
List of equipment
 Elenco dotazioni
 Ausstattungsverzeichnis
 Liste des accessoires fournis
 Lista de suministro
 Lista de equipamentos



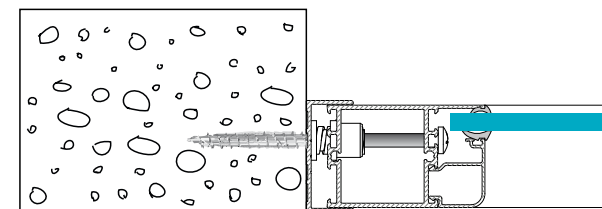
Regulation instructions
 Indicazioni di regolazione
 Angaben zur Einstellung
 Indications de réglage
 Indicaciones de regulación
 Indicações de regulação



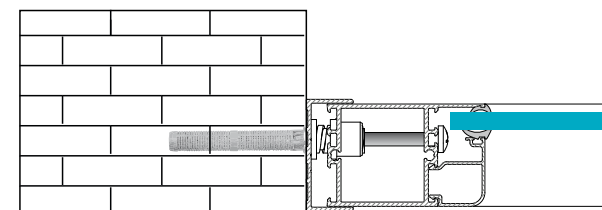
Fastening instructions
 Indicazioni di fissaggio
 Angaben zur Befestigung
 Indications de fixation
 Indicaciones de fijación
 Indicações de fixação



Wood - Legno - Holz
 Bois - Madera - Madeira



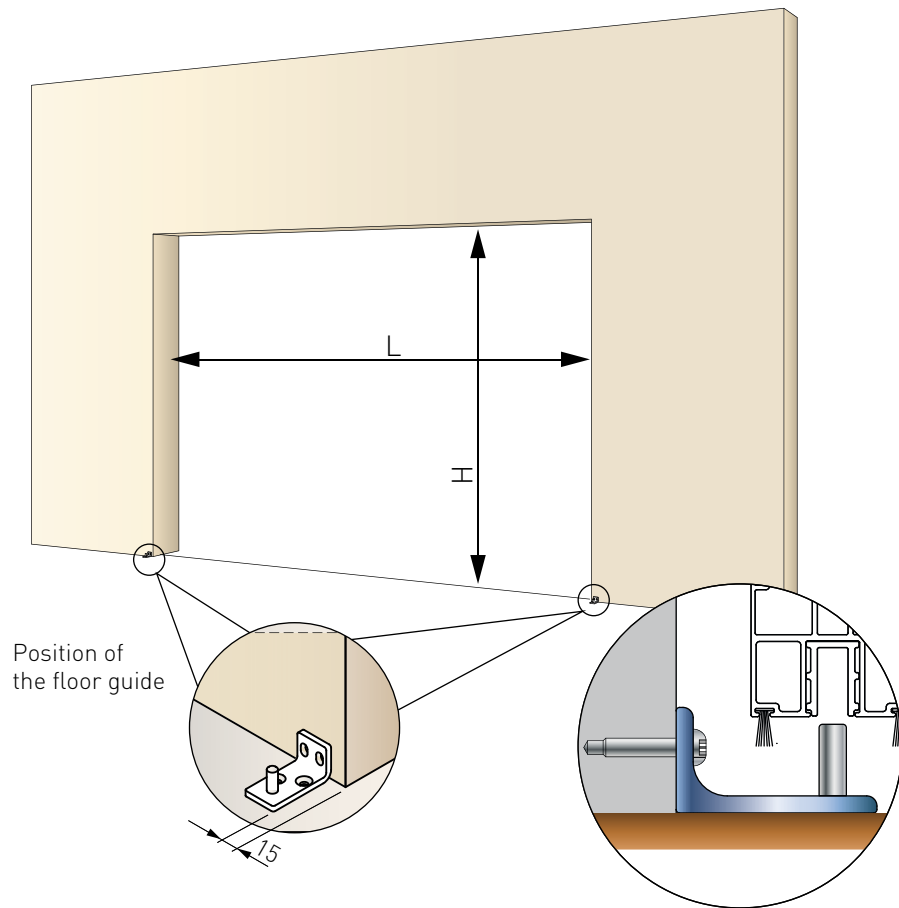
Concrete - Cemento - Zement
 Ciment - Cemento - Concreto



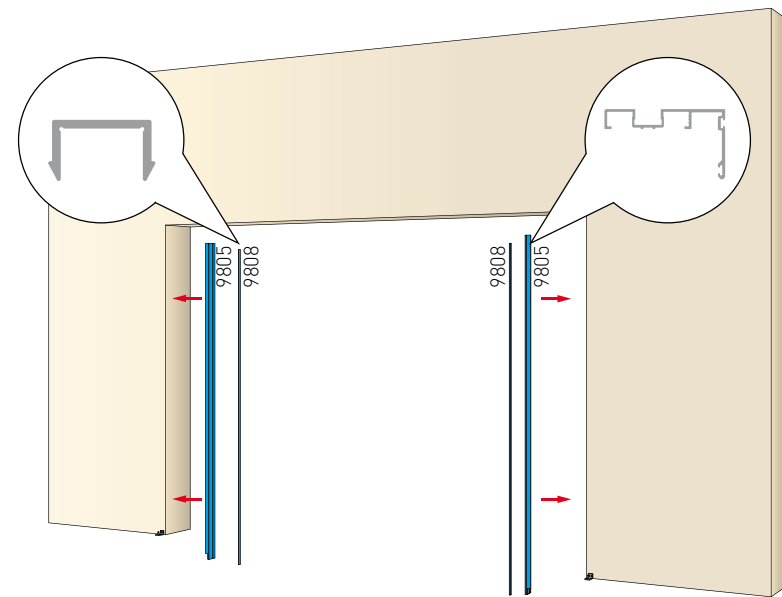
Brick - Mattone - Ziegel
 Brique - Ladrillo - Tijolo

3. Installation instructions for 2+2 moving door wings without beam

- 1 Installation position
NB: check LxH dimensions

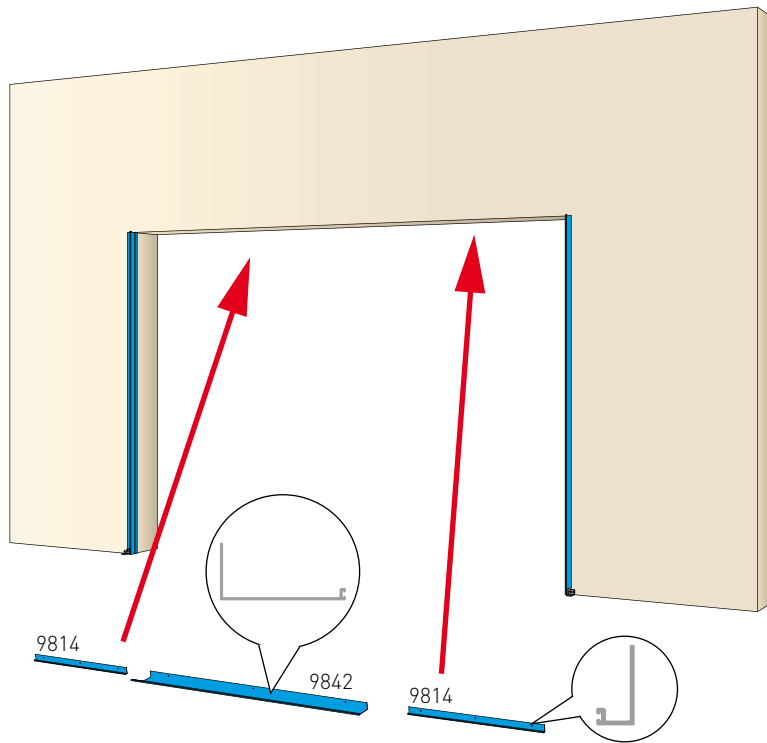


- 2 Installation of frame

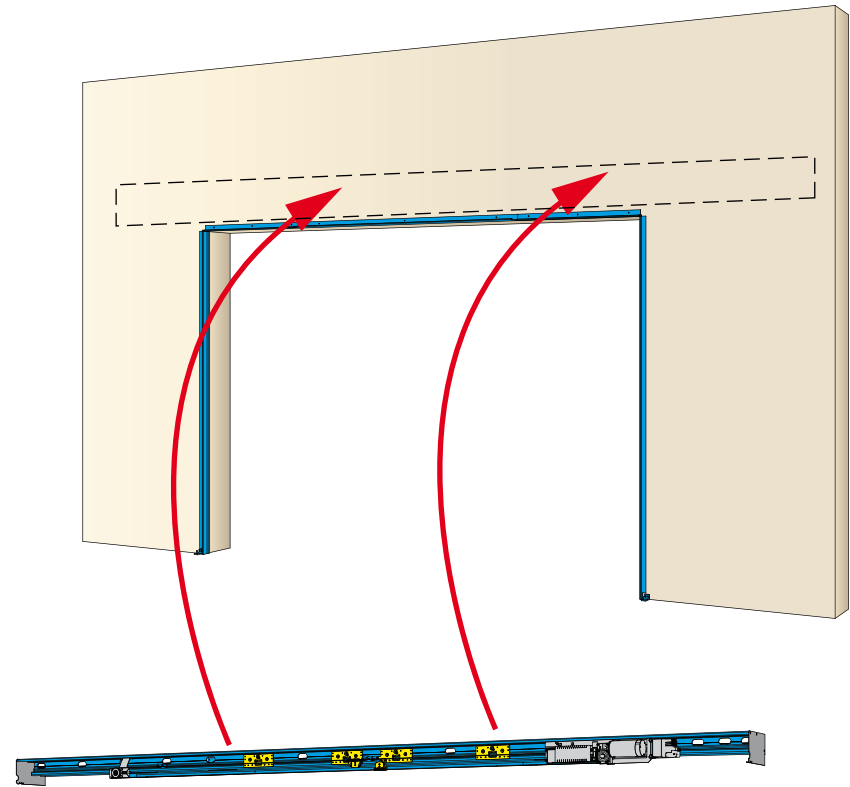


3. Installation instructions for 2+2 moving door wings without beam

3 Installation of frame

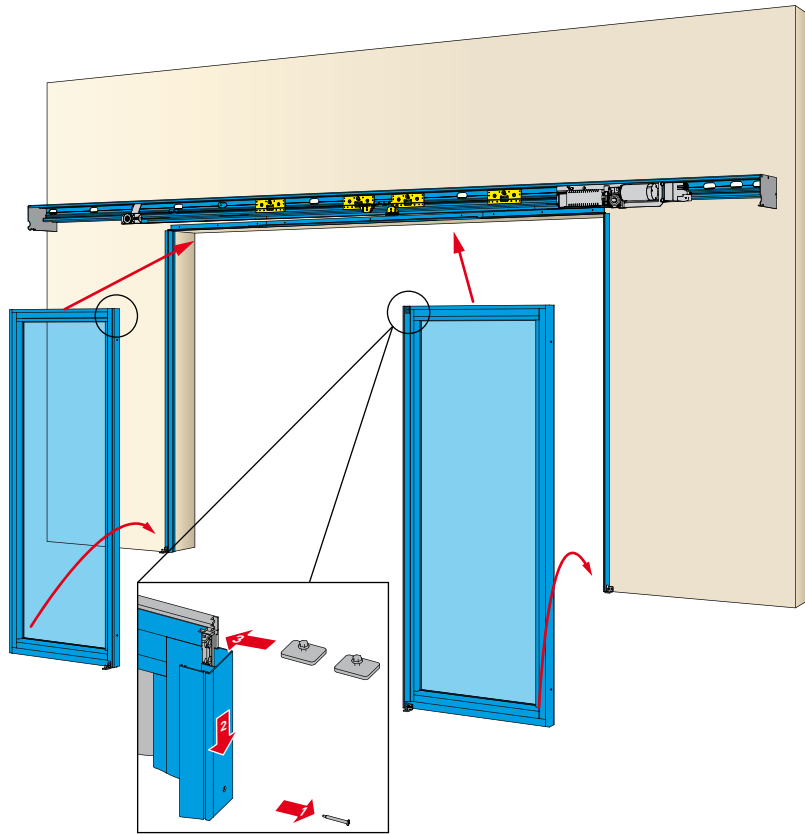


4 Installation of the automation

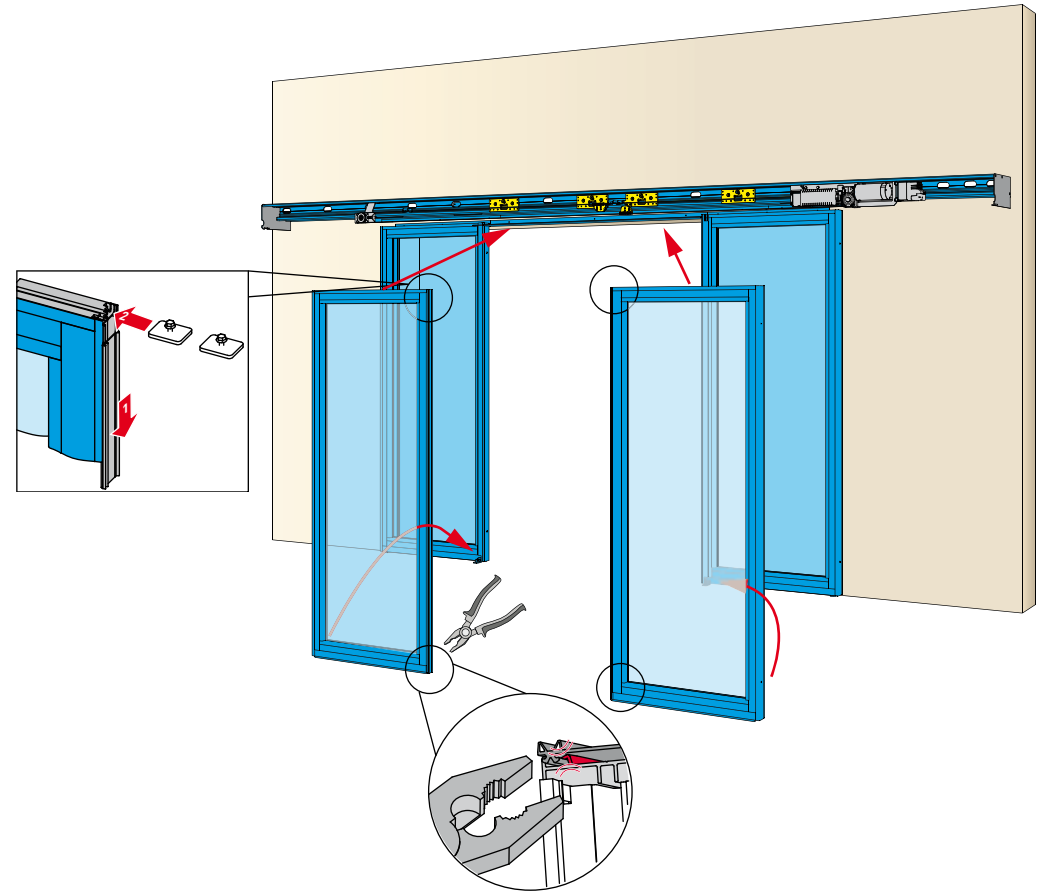


3. Installation instructions for 2+2 moving door wings without beam

5 Door wings installation

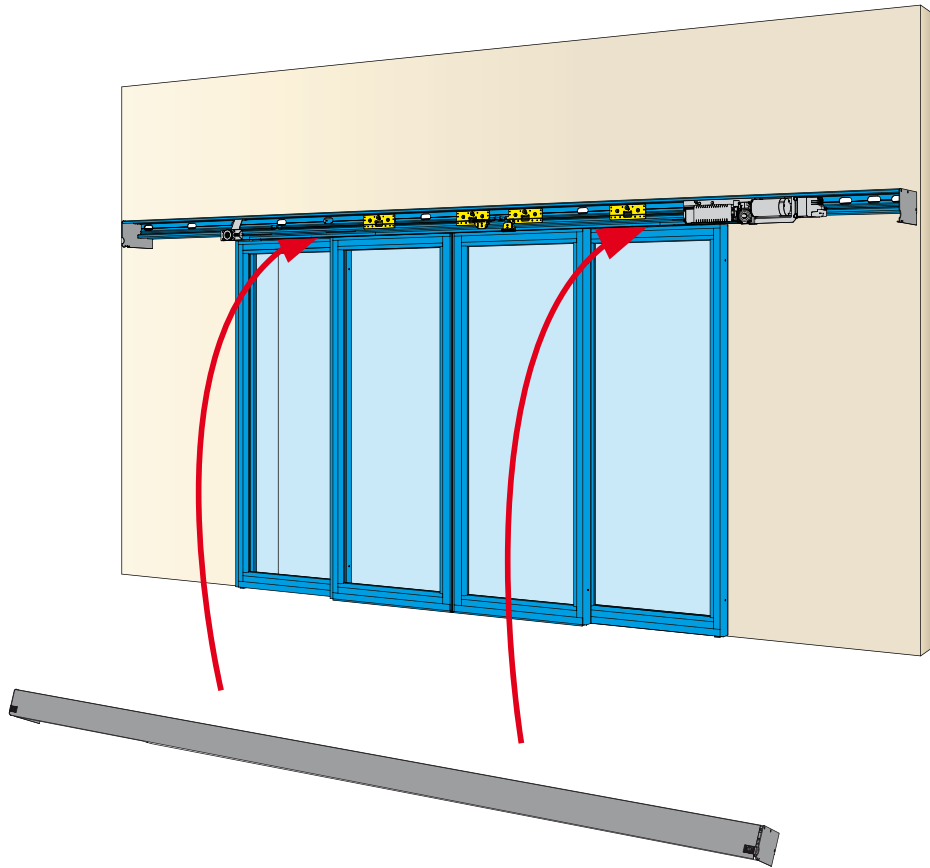


6 Door wing installation

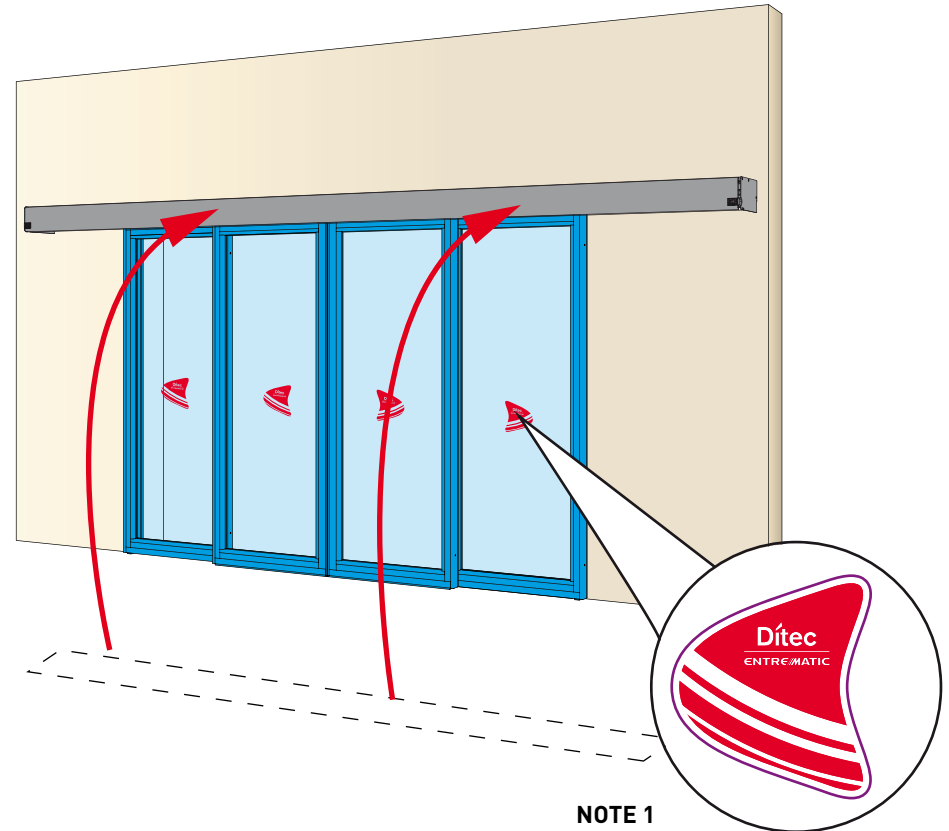


3. Installation instructions for 2+2 moving door wings without beam

7 Door wings installation



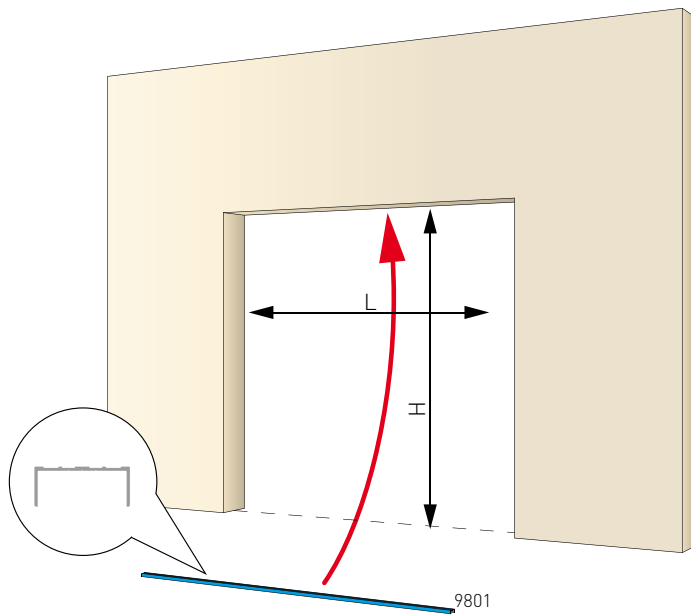
8 End of installation



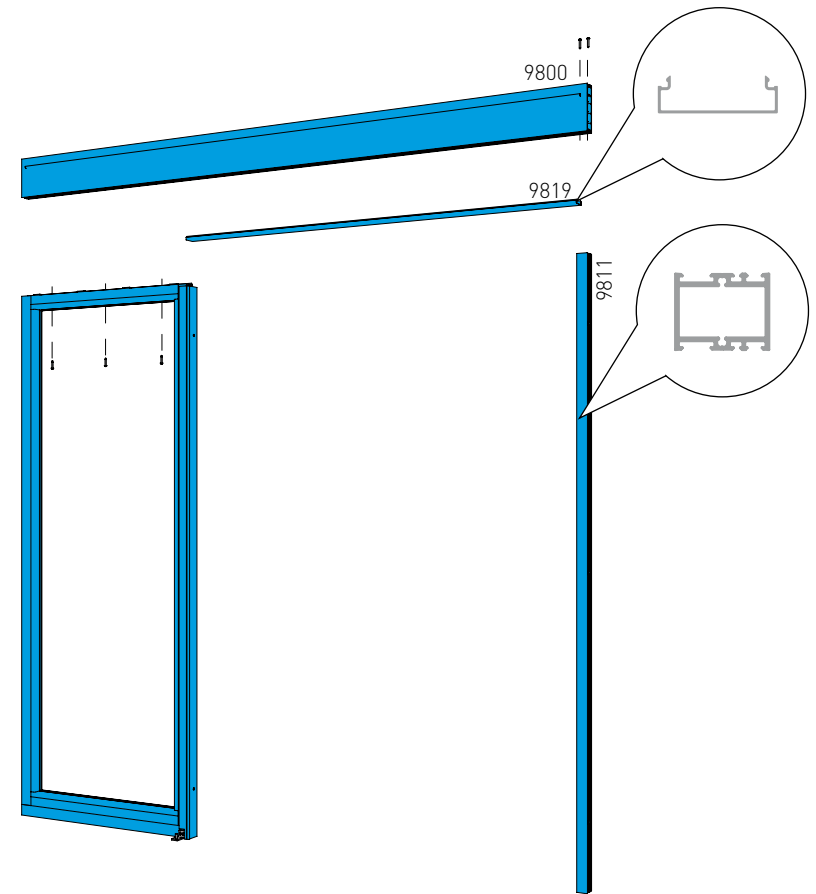
NOTE 1
see page 19

4. Installation instructions for 1+1 moving door wing and 1 fixed door wing with beam

- 1** Installation position
NB: check LxH dimensions

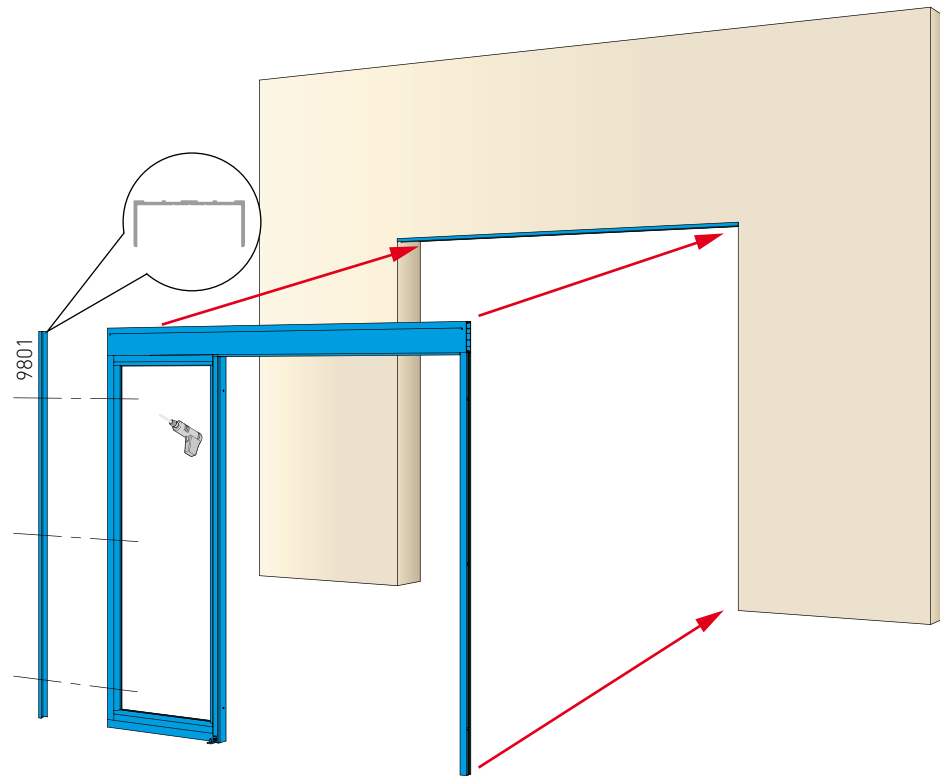


- 2** Frame, beam and fixed door wing assembling

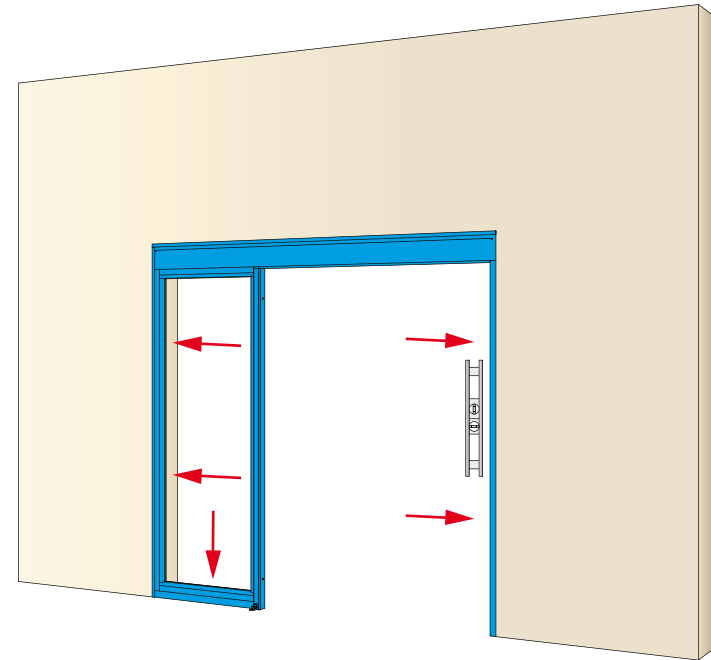


4. Installation instructions for 1+1 moving door wing and 1 fixed door wing with beam

3 Frame, beam and fixed door wing installation

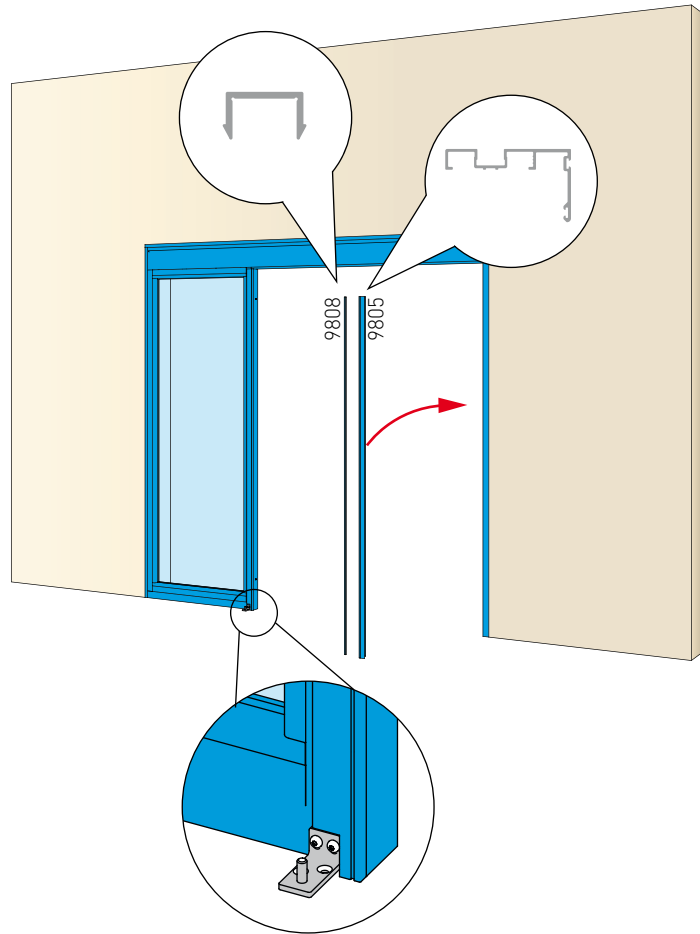


4 Fixed door wing installation

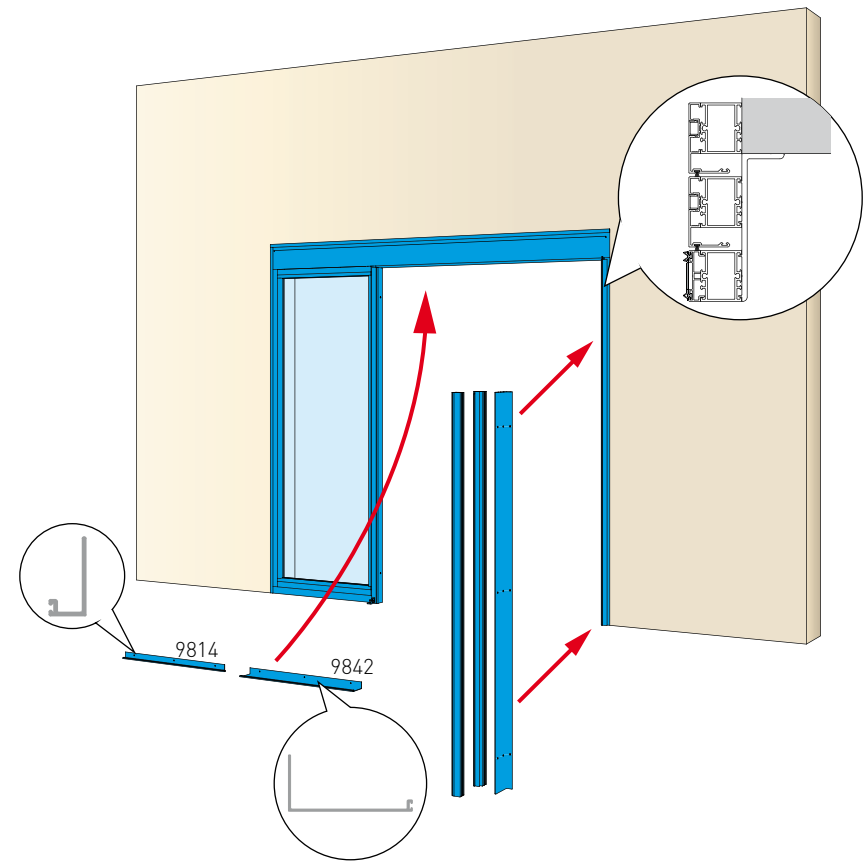


4. Installation instructions for 1+1 moving door wing and 1 fixed door wing with beam

5 Glass and frame installation

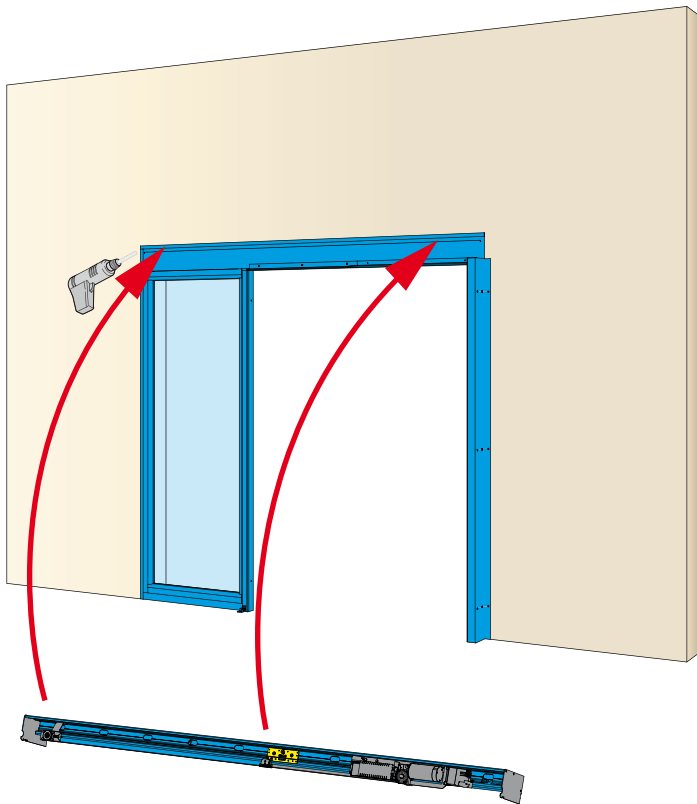


6 Free passage profile installation

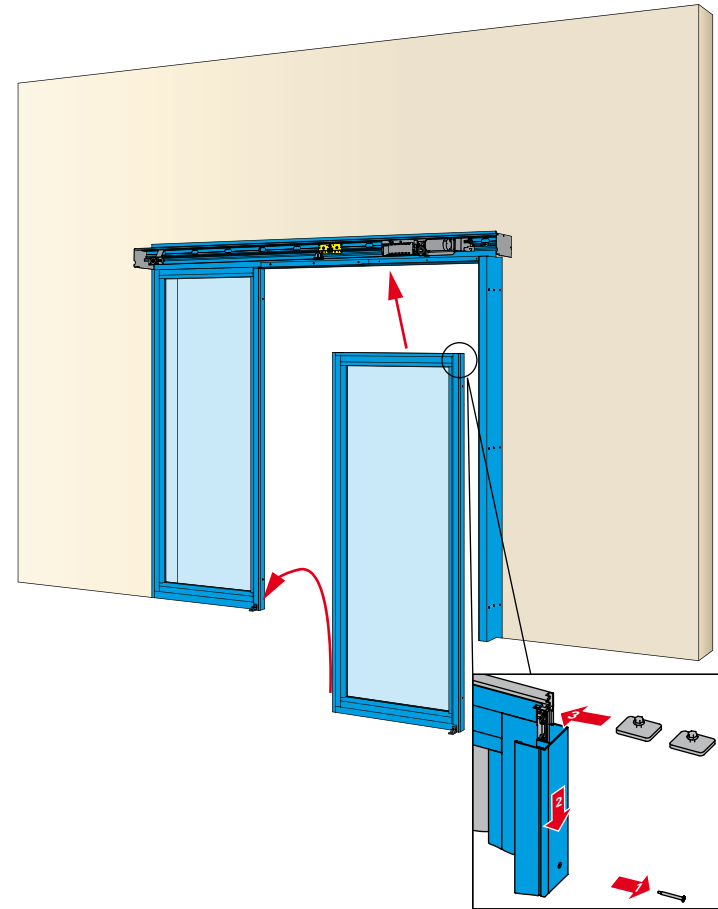


4. Installation instructions for 1+1 moving door wing and 1 fixed door wing with beam

7 Glass and automation installation

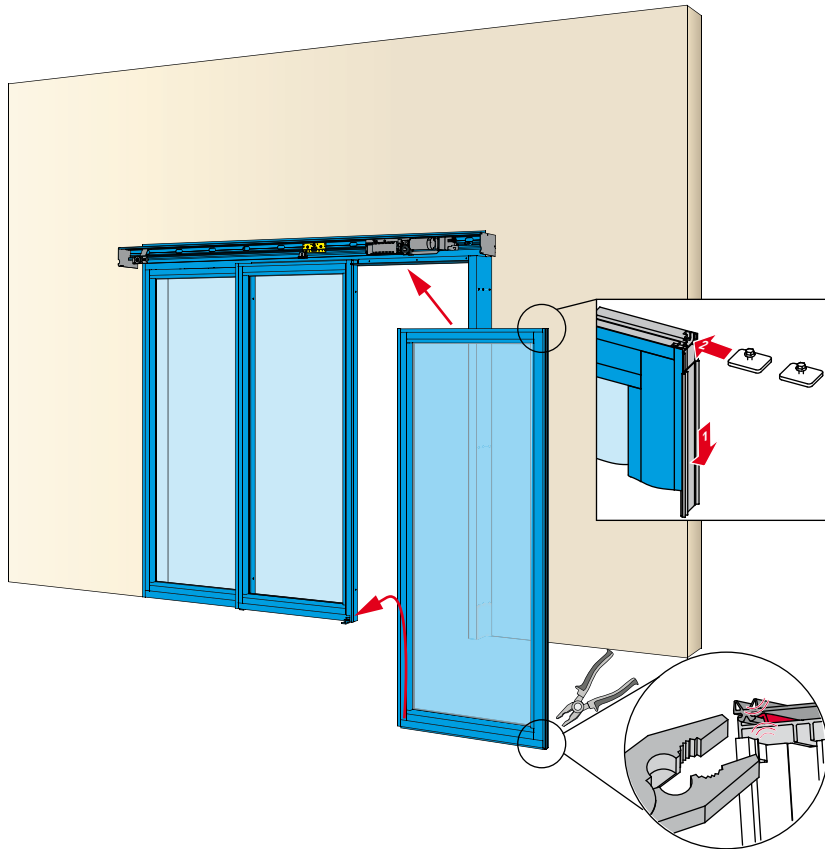


8 Door wing installation

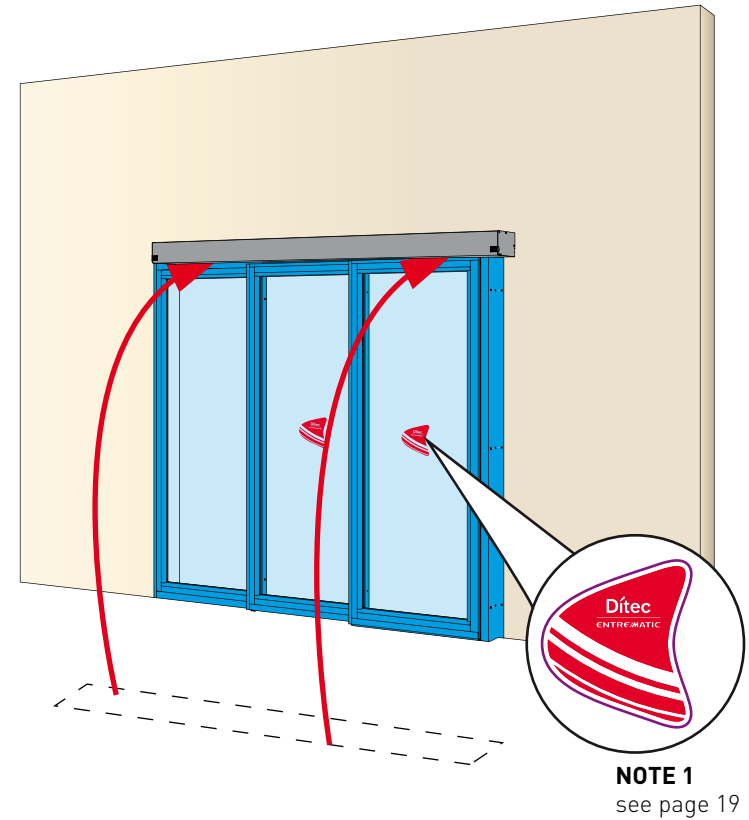


4. Installation instructions for 1+1 moving door wing and 1 fixed door wing with beam

9 Door wing installation

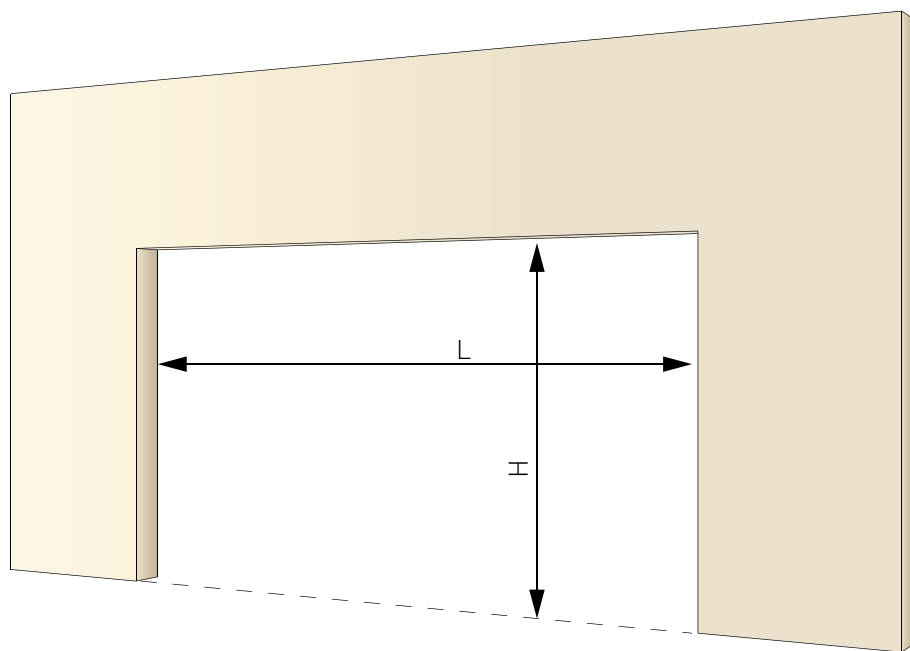


10 Door wing installation

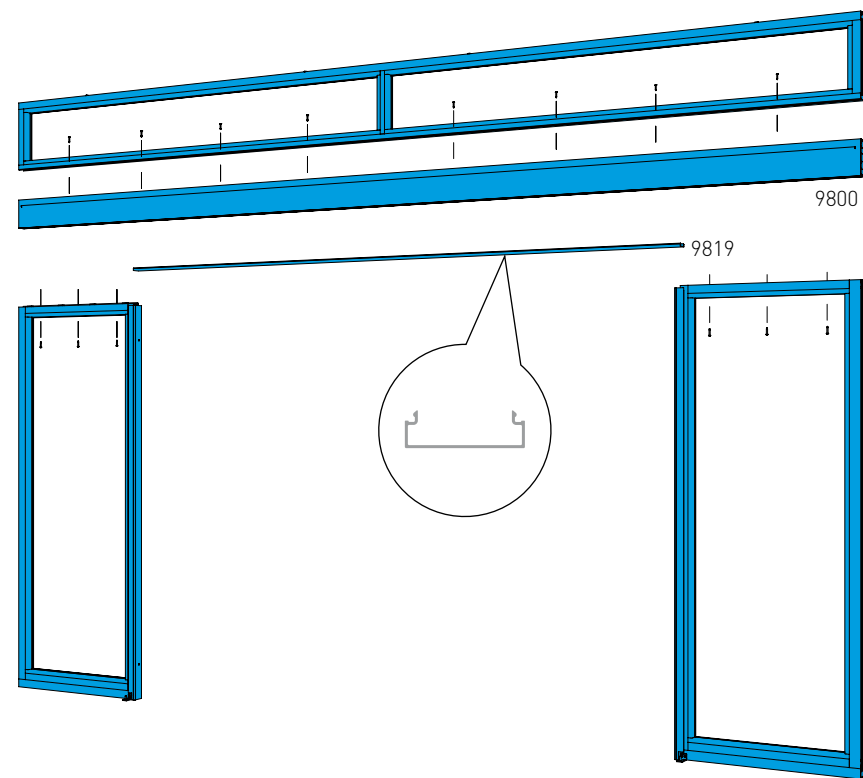


5. Installation instructions for 2+2 moving door wings and 2 fixed door wings with beam and overhead

- 1** Installation position
NB: check LxH dimensions

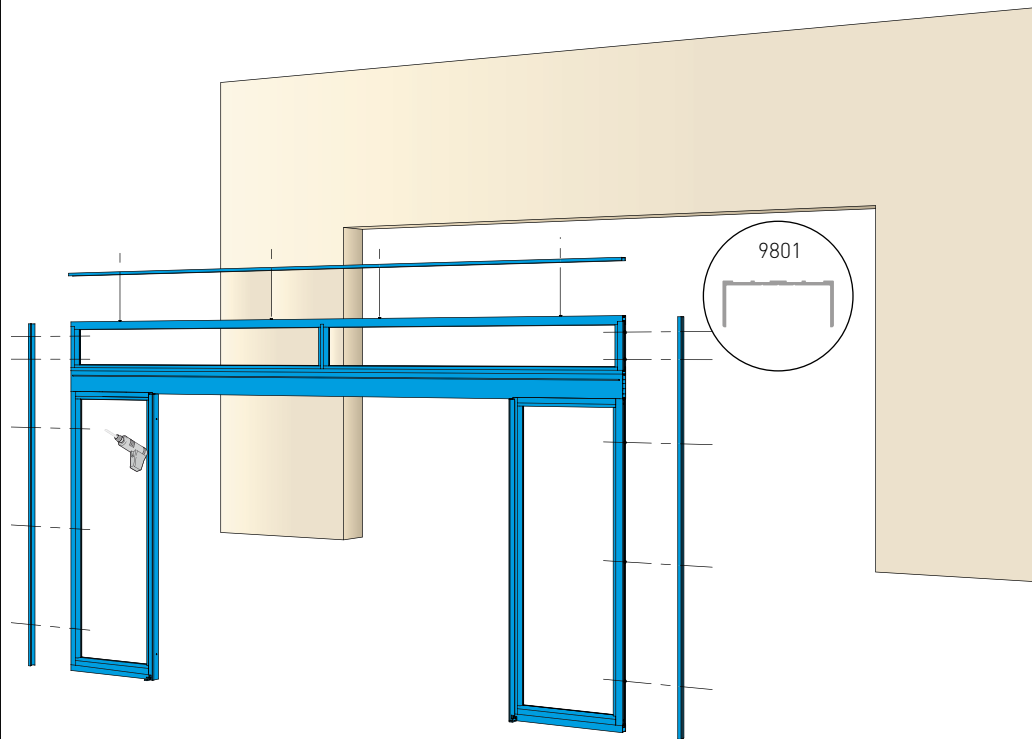


- 2** Frame, beam, overhead and fixed door wings assembling

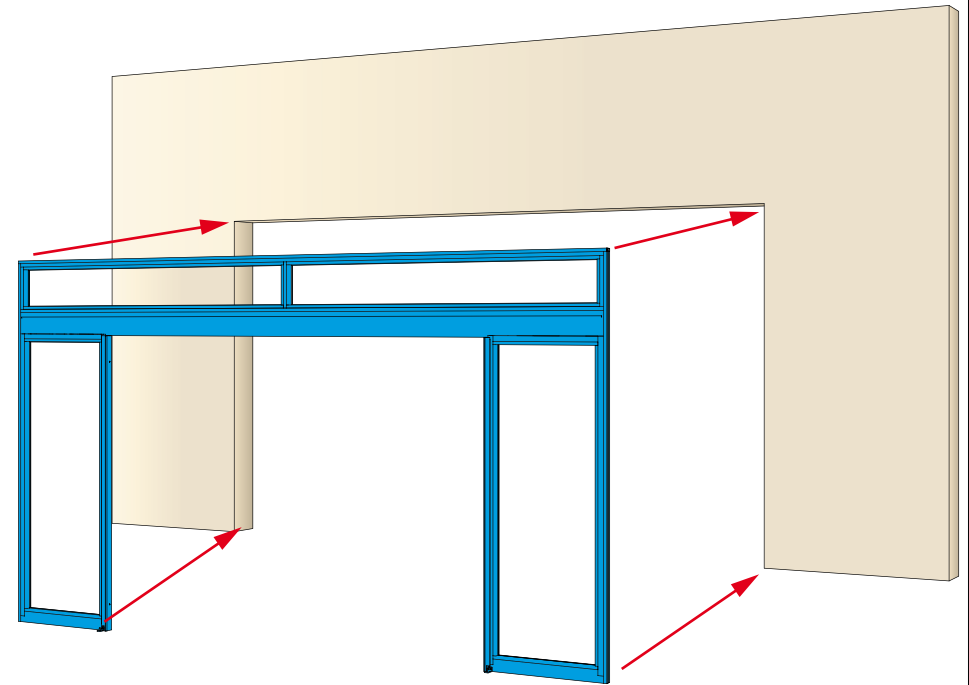


5. Installation instructions for 2+2 moving door wings and 2 fixed door wings with beam and overlight

3 Frame, beam, overlight and fixed door wings installation

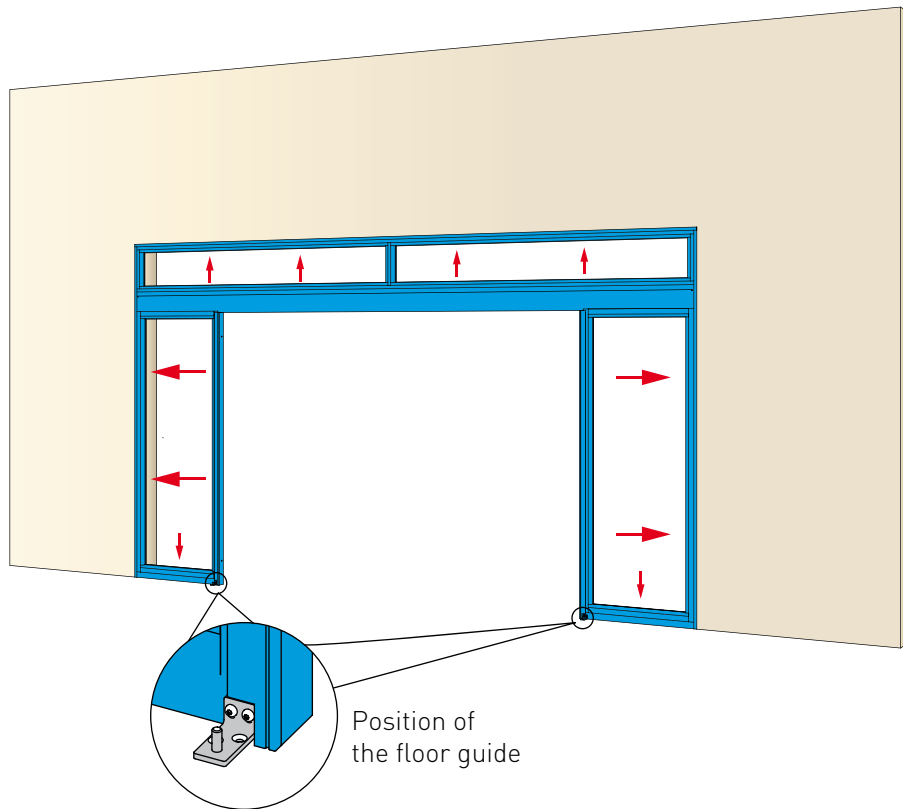


4 Frame, beam, overlight and fixed door wings installation

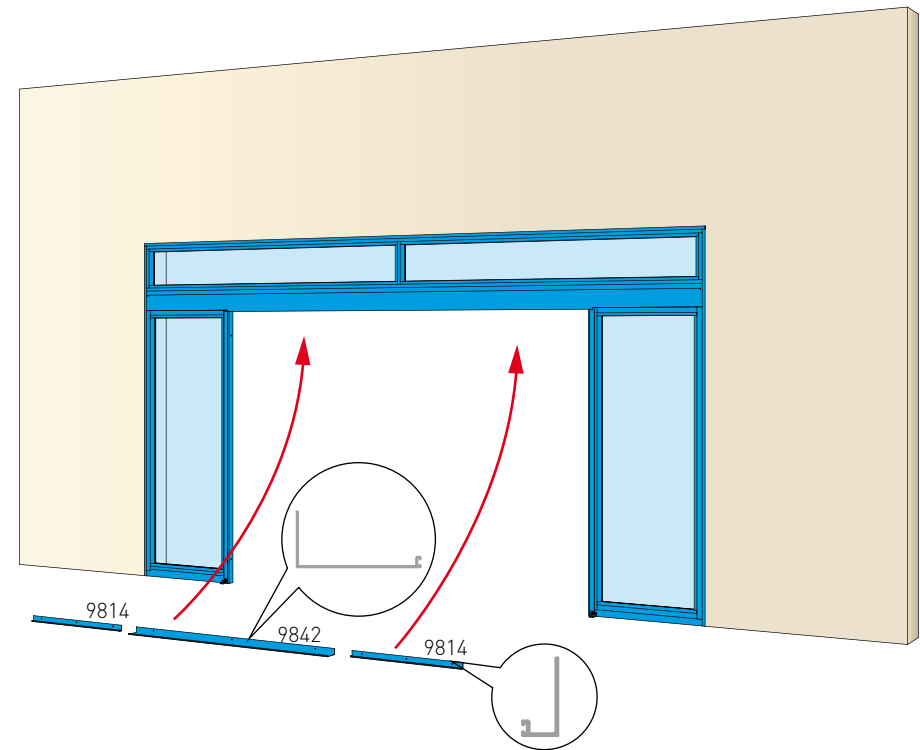


5. Installation instructions for 2+2 moving door wings and 2 fixed door wings with beam and overlight

5 Glass installation

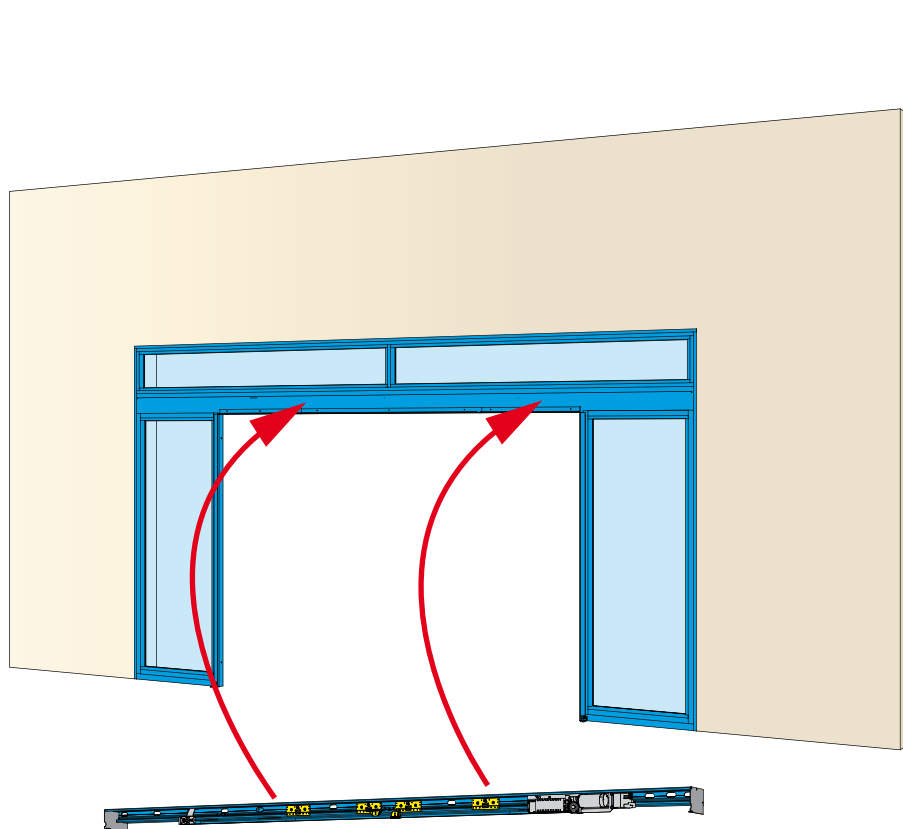


6 Free passage profiles installation

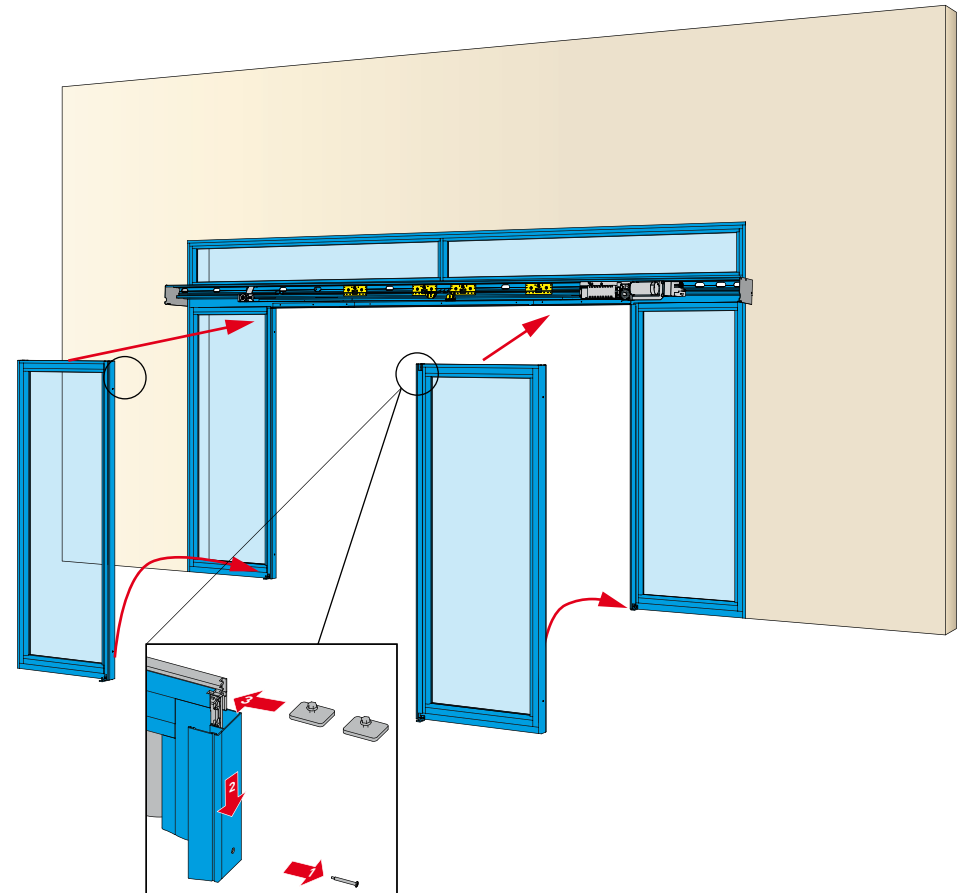


5. Installation instructions for 2+2 moving door wings and 2 fixed door wings with beam and overlight

7 Installation of automation

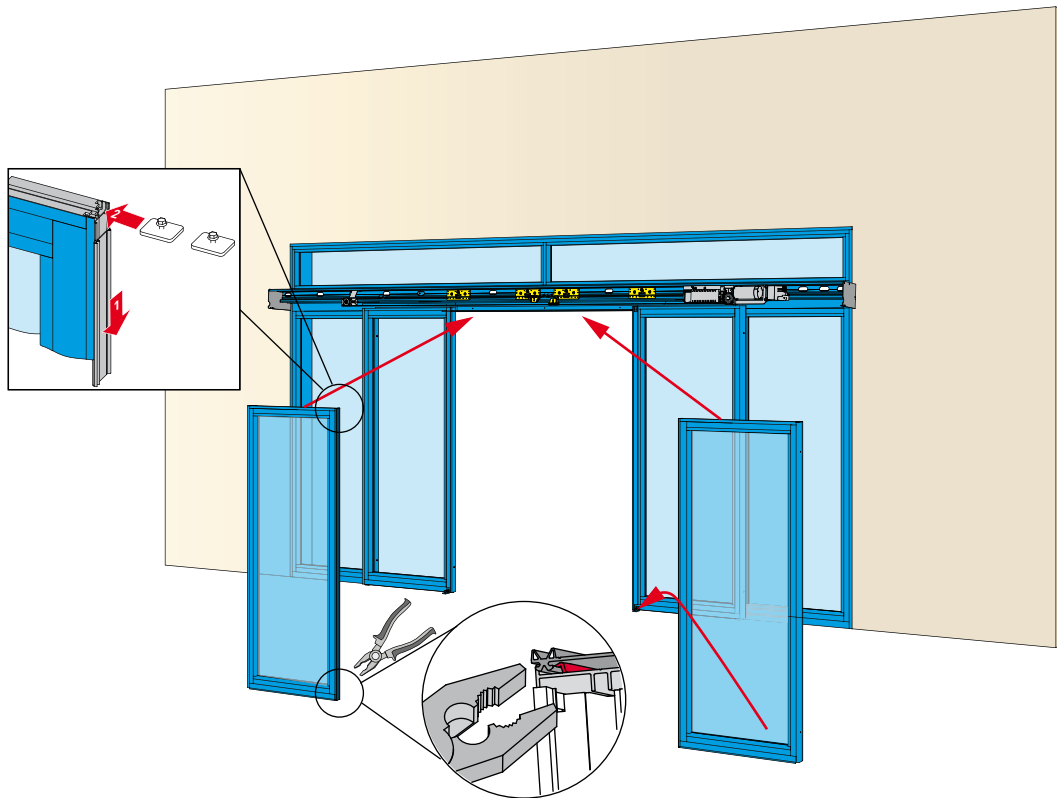


8 Door wings installation

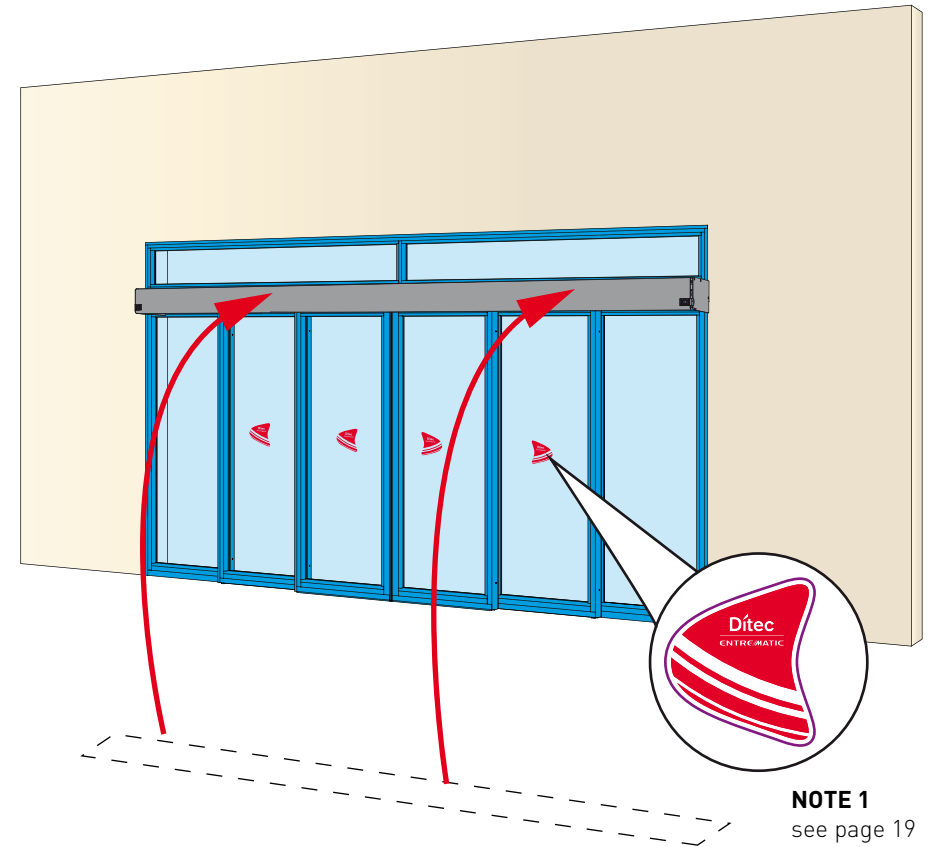


5. Installation instructions for 2+2 moving door wings and 2 fixed door wings with beam and overlight

9 Door wings installation



10 Casing and end installation



NOTE 1: in compliance with the EN 16005 Standard, transparent glass panels must be marked. The application of stickers complies with the provisions of the Standard regarding accident prevention.

ENTRE//MATIC

Entrematic Group AB
Lodjursgatan 10
SE-261 44, Landskrona
Sweden
www.ditecentrematic.com

